



LENNAR

INTERSTATE
35E

35,000 ADT

Future Otter Lake Road Extension

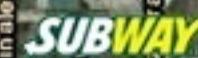
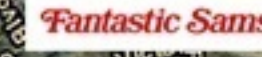
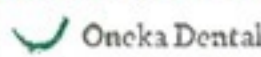
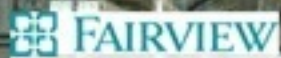
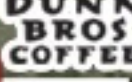
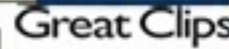
Available



16,600 ADT

Main Street

21,000 ADT

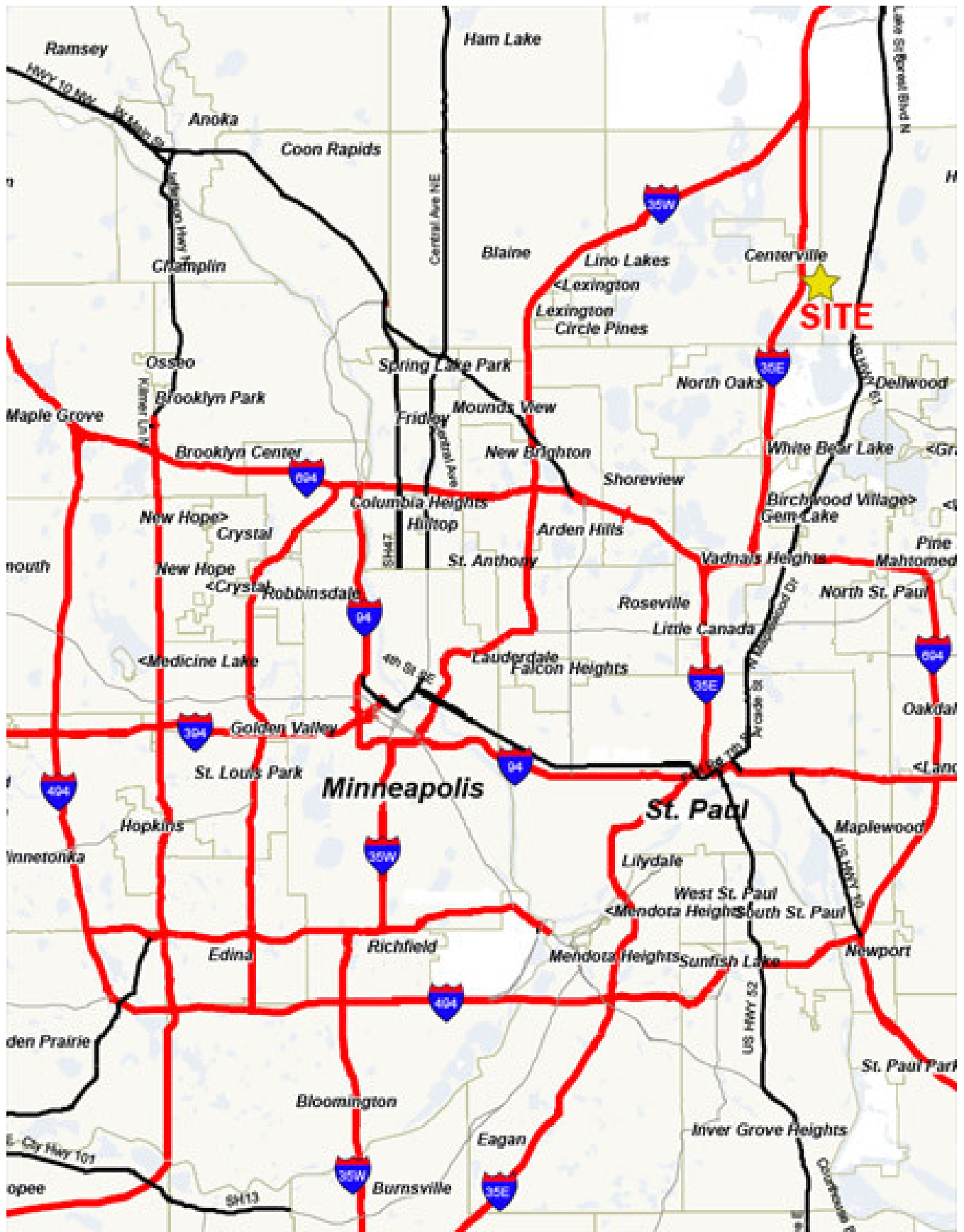


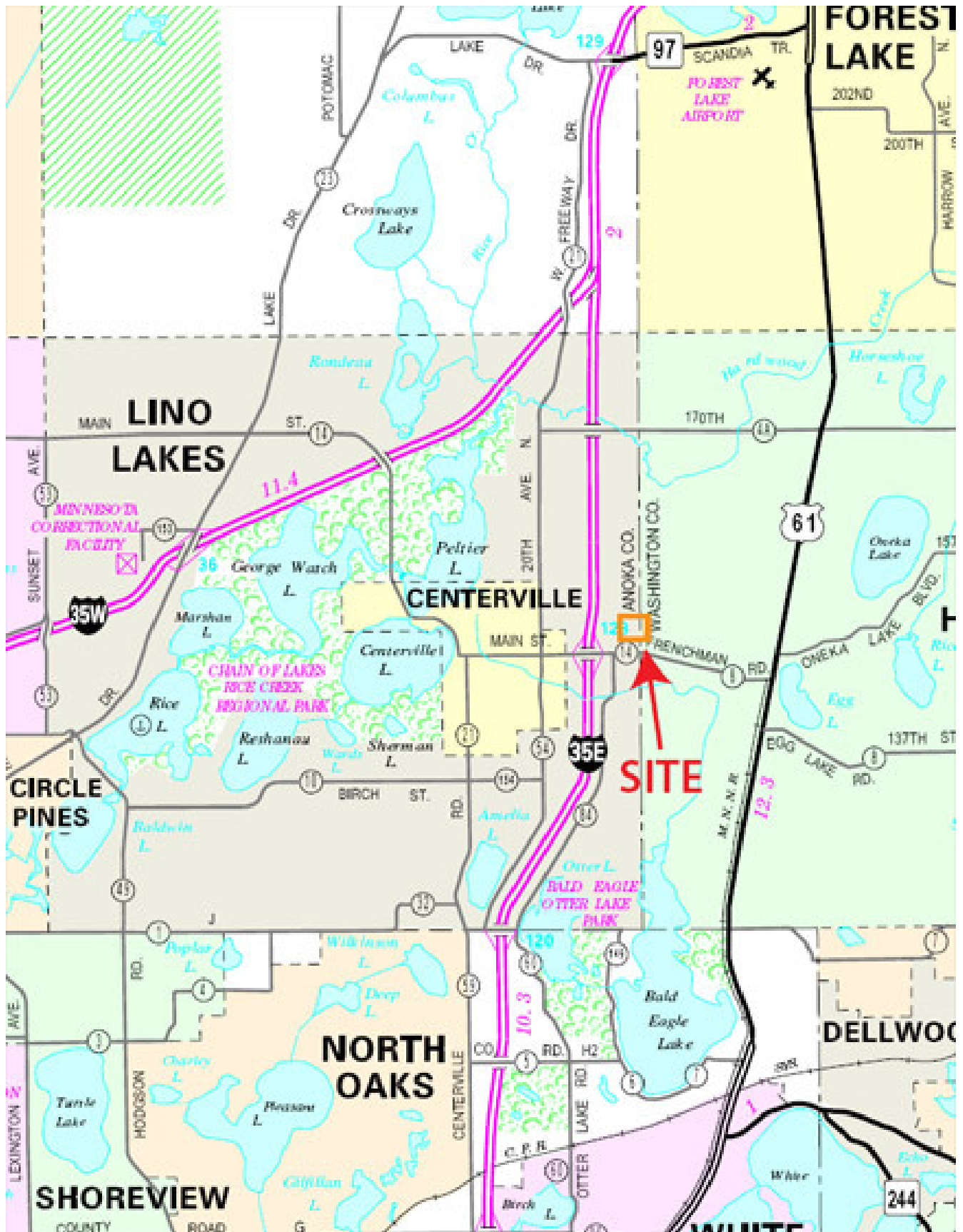
47,000 ADT

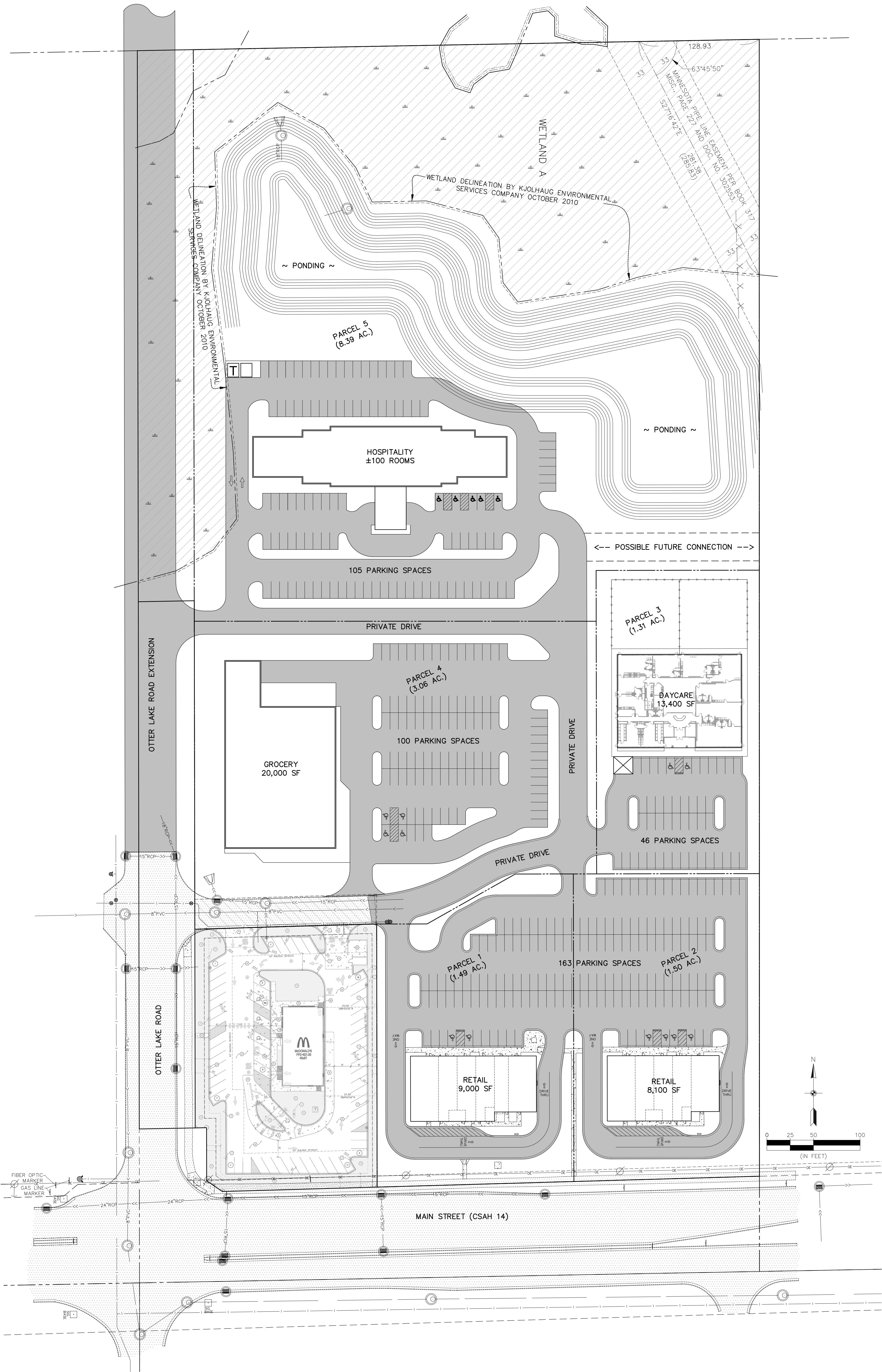
INTERSTATE
35E

15,000 ADT









128.93
63°45'50"
MINNESOTA PIPE LINE EASEMENT PER BOOK 317
WSC. PAGE 222 AND DOC. NO. 502553
52716'42"E
281.38
(285.83)

WETLAND DELINEATION BY KJOLHAUG ENVIRONMENTAL SERVICES COMPANY OCTOBER 2010

WETLAND DELINEATION BY KJOLHAUG ENVIRONMENTAL SERVICES COMPANY OCTOBER 2010

PARCEL 5
(8.39 AC.)

HOSPITALITY
±100 ROOMS

105 PARKING SPACES

←-- POSSIBLE FUTURE CONNECTION -->

PARCEL 3
(1.31 AC.)

DAYCARE
13,400 SF

46 PARKING SPACES

PARCEL 4
(3.06 AC.)

GROCERY
20,000 SF

100 PARKING SPACES

PARCEL 1
(1.49 AC.)

RETAIL
9,000 SF

PARCEL 2
(1.50 AC.)

RETAIL
8,100 SF

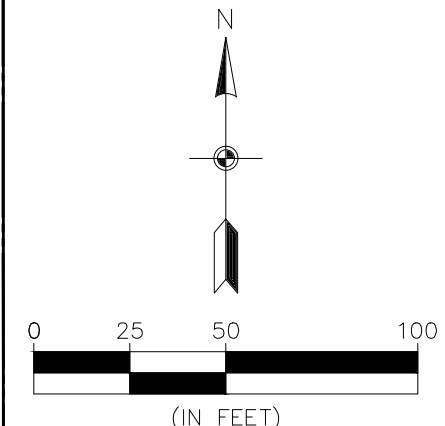
MAIN STREET (CSAH 14)

OTTER LAKE ROAD EXTENSION

OTTER LAKE ROAD

PRIVATE DRIVE

PRIVATE DRIVE



FIBER OPTIC MARKER
GAS LINE MARKER